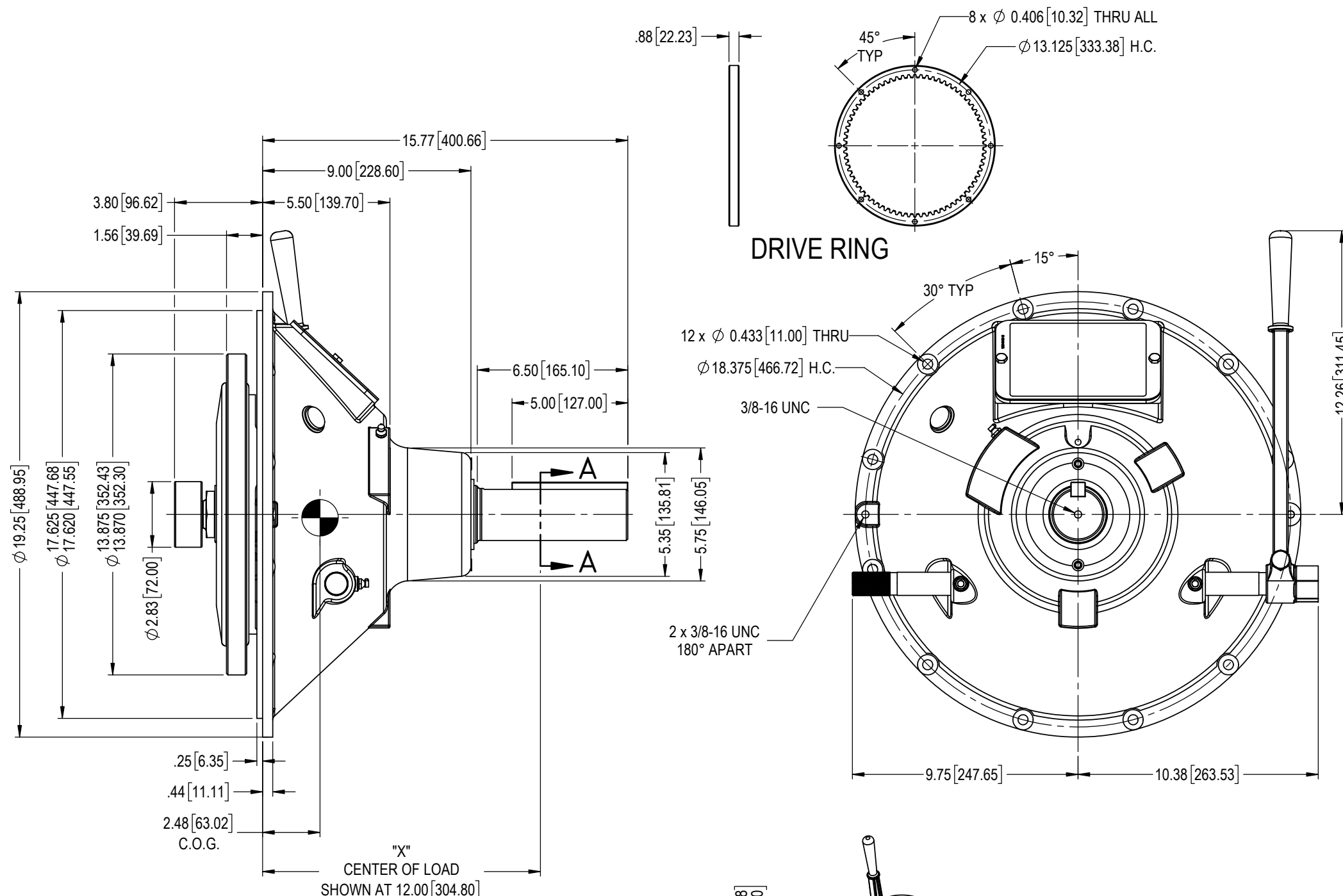


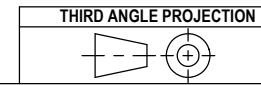
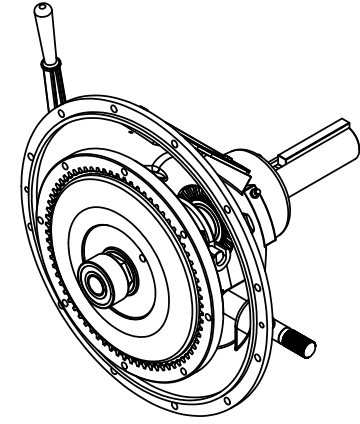
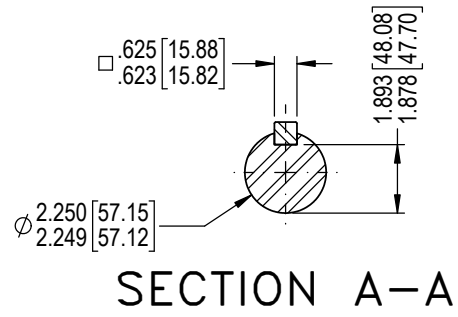
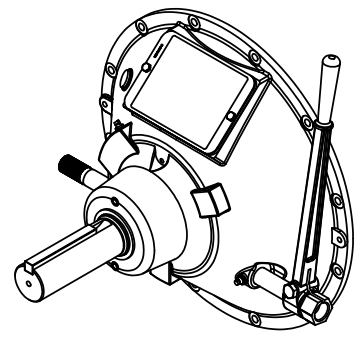
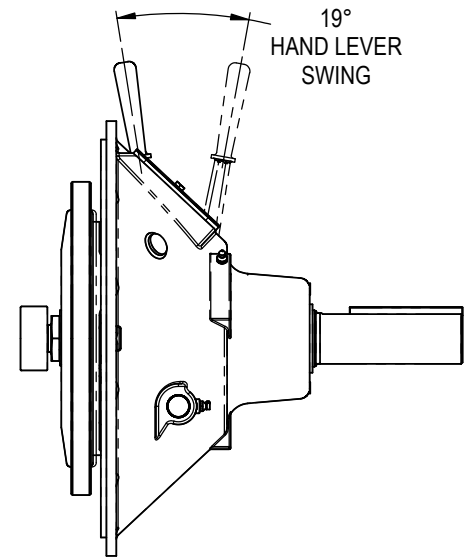
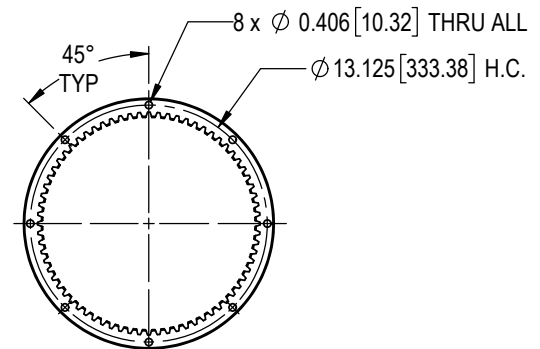
COMPLETE ASSEMBLY
 EST WT = 145 lb [65.6 kg]
 DRIVE RING & FRICTION DISCS (PTO DIS-ENGAGED)
 EST WT = 11.4 lb [5.17 kg]
 EST WR² = 2.93 lb-ft² [0.123 kg-m²]
 ALL ROTATING MEMBERS (PTO ENGAGED)
 EST WR² = 6.72 lb-ft² [0.283 kg-m²]

REFERENCE "APPENDIX A" IN INSTALLATION AND MAINTENANCE MANUAL, WIM-TD-006, FOR FOLLOWING INFORMATION:

- * CLUTCH ADJUSTMENT
- * MAIN BEARING ENDPLAY SETTING (SET FOR SIDELOAD)
- * LUBRICATION
- * PILOT BEARING INSTALLATION
- * BOLT TORQUE
- * THREADLOCKER REQUIREMENT
- * HUB NUT TORQUE
- * SIDELOAD RATINGS (REFERENCE CHART NO. 111-1000)



DRIVE RING



WPT POWER CORPORATION
 ENGINEERING DRAWINGS
 ARE NOT TO BE REPRODUCED
 IN ANY FORM WHATSOEVER
 WITHOUT AUTHORIZATION

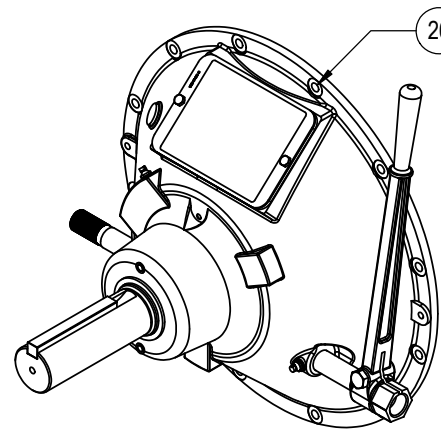
DRAWN	RC	DATE	09 Sep 19
CHECKED	RDH	DATE	9/16/2019
APPROVED	RDH	DATE	9/16/2019
ISSUED	RC	DATE	16 Sep 19

REV	REVISIONS	DATE	BY

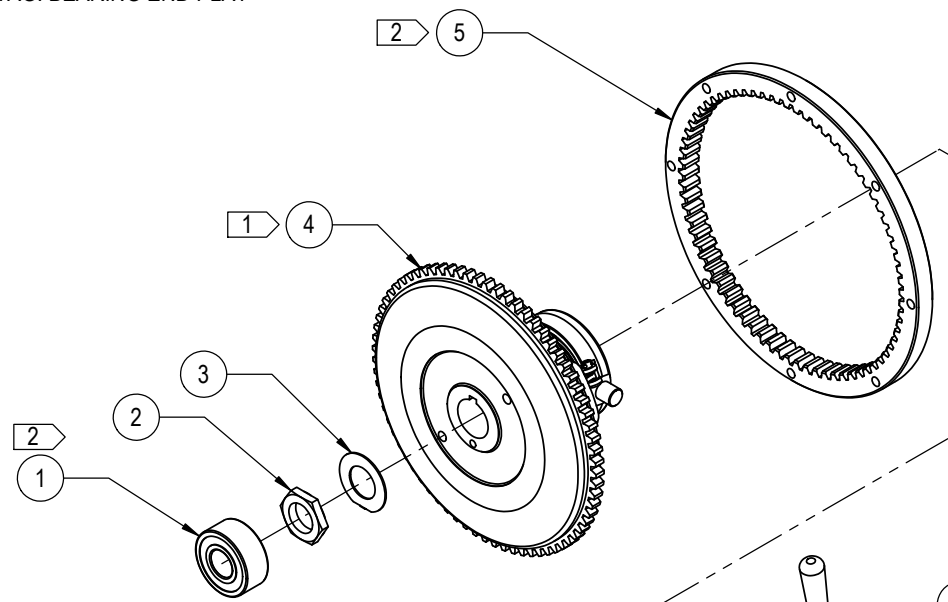
WPT POWER CORPORATION

SP111HP MECH PTO, SAE #2 BH, 72MM PB

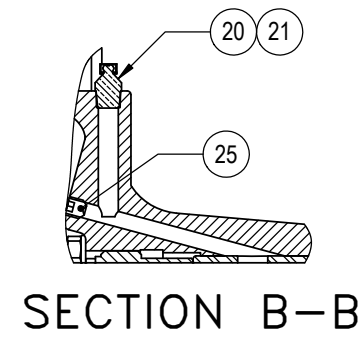
PART NUMBER	REVISION	SHEET	OF
P11-12AC-000	A	1	3



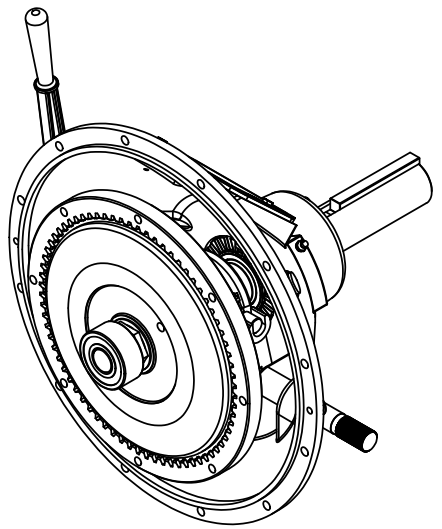
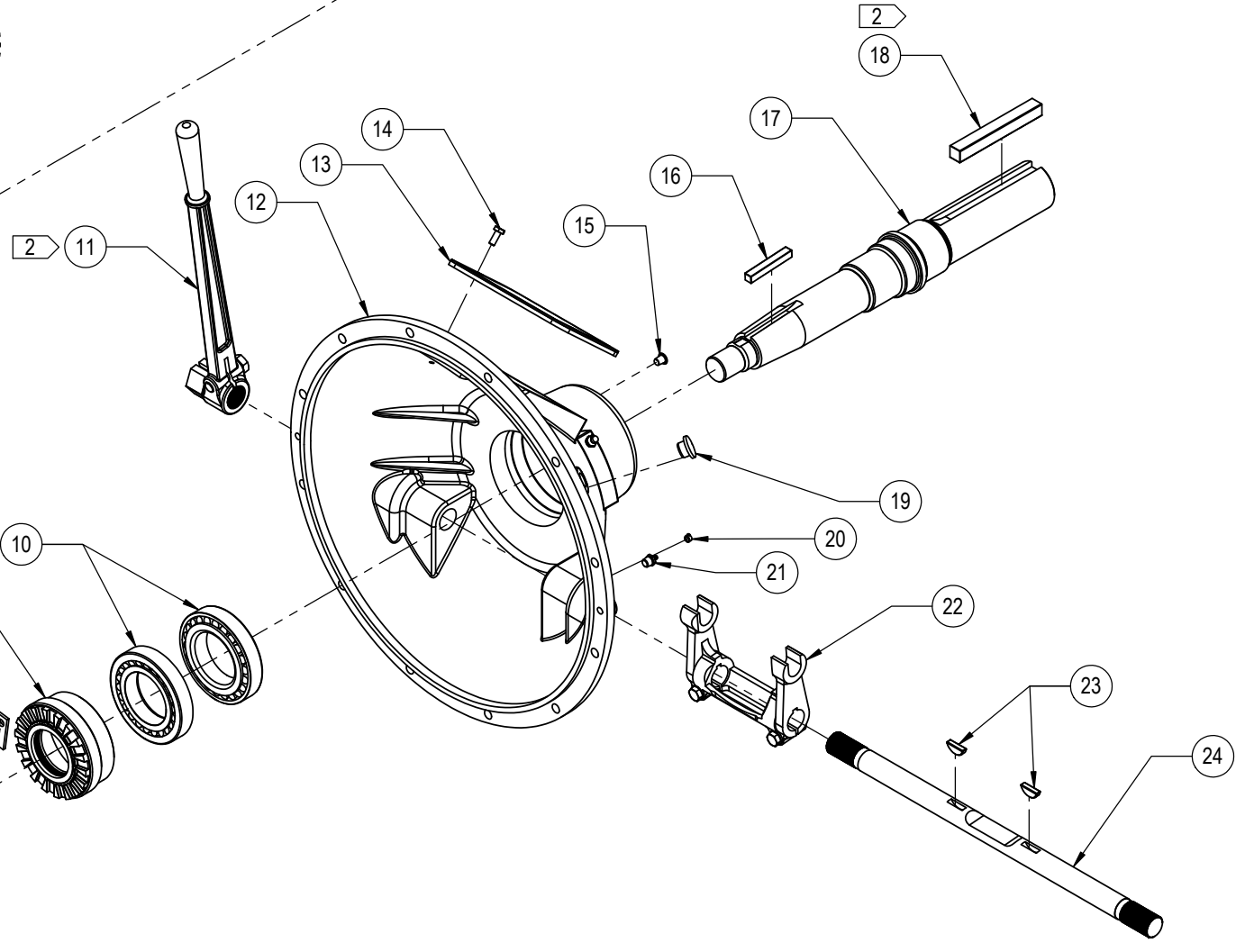
26 TAG: BEARING END PLAY



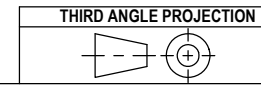
1 SEE CLUTCH PACK DRAWING FOR OTHER IMPORTANT DETAILS.
2 SHIP LOOSE

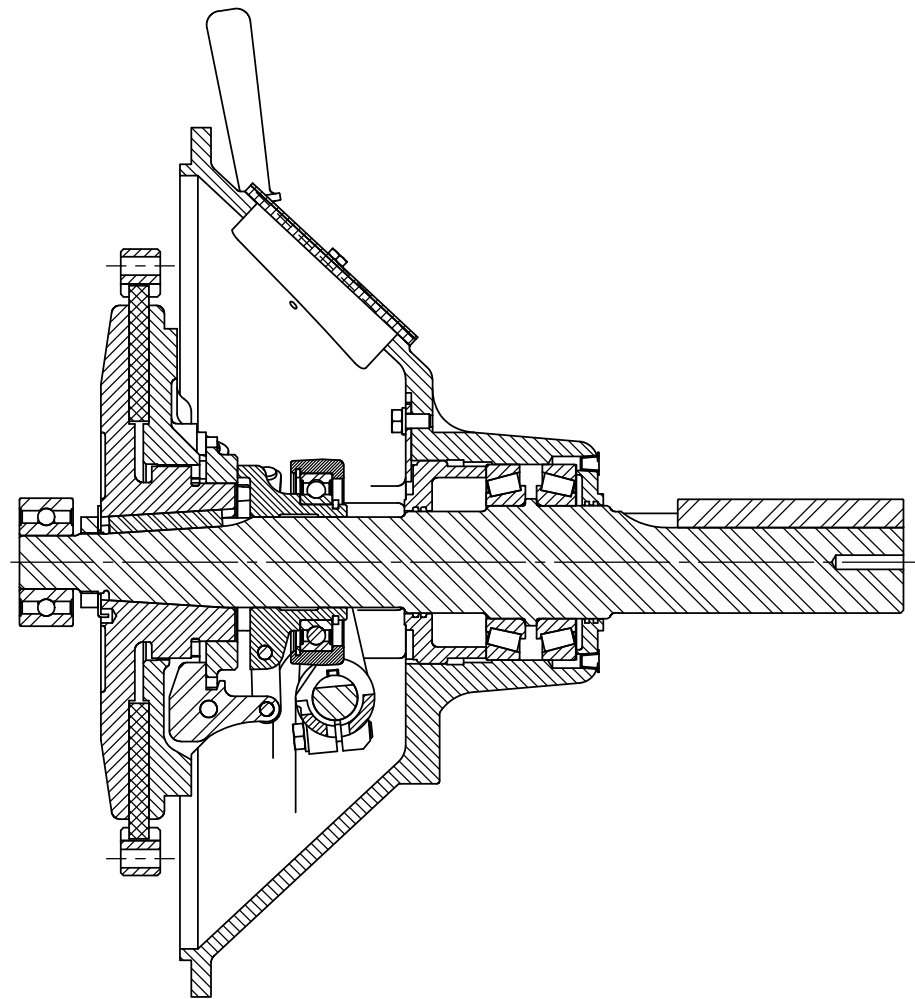


SECTION B-B

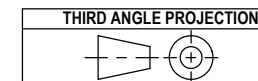
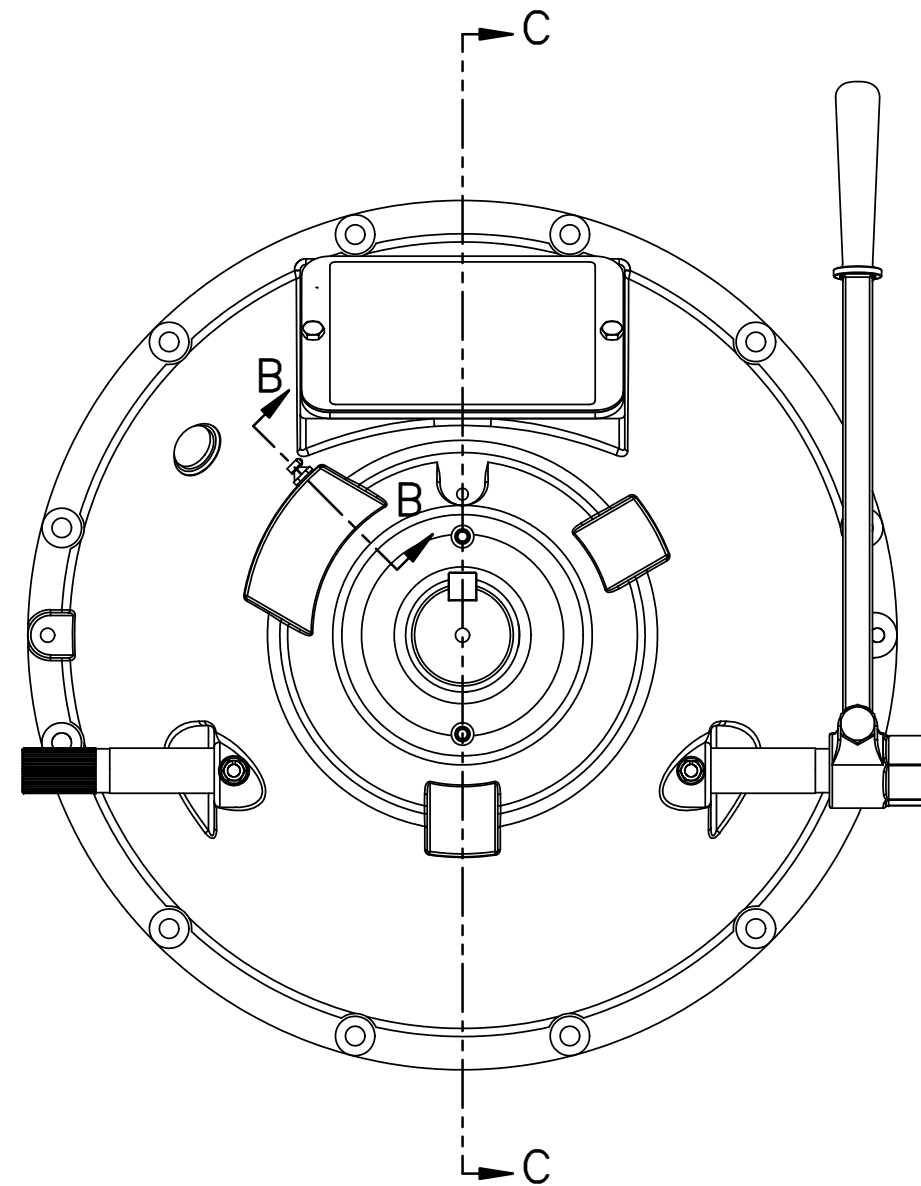


WPT POWER CORPORATION ENGINEERING DRAWINGS ARE NOT TO BE REPRODUCED IN ANY FORM WHATSOEVER WITHOUT AUTHORIZATION		WPT POWER CORPORATION		SP111HP MECH PTO, SAE #2 BH, 72MM PB	
DRAWN	RC	DATE	09 Sep 19	REVISION	A
CHECKED	RDH	DATE	9/16/2019	SHEET	2
APPROVED	RDH	DATE	9/16/2019	OF	3
ISSUED	RC	DATE	16 Sep 19	PART NUMBER	P11-12AC-000





SECTION C-C



WPT POWER CORPORATION ENGINEERING DRAWINGS ARE NOT TO BE REPRODUCED IN ANY FORM WHATSOEVER WITHOUT AUTHORIZATION		WPT POWER CORPORATION	
DRAWN RC	DATE 09 Sep 19	SP111HP MECH PTO, SAE #2 BH, 72MM	
CHECKED RDH	DATE 9/16/2019	PB	
APPROVED RDH	DATE 9/16/2019		
ISSUED RC	DATE 16 Sep 19	PART NUMBER P11-12AC-000	REVISION A
		SHEET 3	OF 3